

# EXEL ORBITAL WELD HEADS & PRESSURE CONTROLLER



## ● HIGH PERFORMANCE EXEL WELD HEADS ●

The Exel Weld Head range is made up of a Rotor Driver unit plus five interchangeable, air-cooled Weld Heads specifically designed to deliver top-quality, repeatable welds in high purity Tube & Fittings applications. The Rotor Driver and Weld Heads can be used with the Exel EPS Power Supply or with any of the AMI Tube Power Supplies (M205, M207, M307).



- Rugged air-cooled construction for lower maintenance/operating costs.
- Slim-line & heavy duty fixtures.
- Weld components from 1/8" - 1" (3,175 mm - 25,4 mm).
- Superior clamping & ease of alignment.



◀ The RDR Series rotor drivers operates all the rotor units in the Exel product line, including the slim line series.

- The robust, high impact resistant plastic design ensures superior reliability under the most extreme construction conditions.

## ● SLIM LINE RANGE FOR SPECIAL APPLICATIONS & MICRO FITS ●

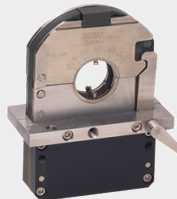
**RTU-004**



Sizes: 1/8" - 1/4"  
(3,175 mm - 6,35 mm)

*cf Swagelok® Series 4*

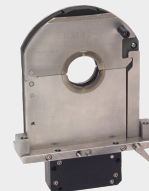
**RTU-008SL**



Sizes: 1/8" - 1/2"  
(3,175 mm - 12,7 mm)

*cf Swagelok® Series 8*

**RTU-016SL**



Sizes: 1/2" - 1"  
(12,7 mm - 25,4 mm)

**No Direct Competitor**

- Unique "over the top clamp mechanism" combined with solid tube inserts ensures stronger fixturing and easier component alignment.
- High temperature thermoplastic construction gives significant advantages in heat management and durability.
- Ideal for restricted access applications such as sanitary ferrules and other limited-clearance fitting applications.

[www.arcmachines.com/ExelbyAMI](http://www.arcmachines.com/ExelbyAMI)

# EXEL ORBITAL WELD HEADS & PRESSURE CONTROLLER

## AIR-COOLED WELD HEADS

### RTU-008



Sizes: 1/4" - 5/8"  
(6,35 mm - 15,87 mm)  
cf Swagelok® Series 5

### RTU-032



Sizes: 1/2" - 2"  
(12,7 mm - 50,8 mm)  
cf Swagelok® Series 10 and  
Series 20

- Extended duty cycle.
- Superior, repeatable and secure fixturing for Semiconductor and Biopharmaceutical industries.
- Nearly 2x clamping power over competitors.
- Patented latch system on the RTU-032 provides extraordinary rigid fixturing.



◀ Patented latch system

## AUTOMATIC PRESSURE CONTROLLER

### SG1 - The First Automatic Pressure Controller for Orbital Welding of Tube or Pipe

- Sizes: 1/8" - 6" (3,175 mm - 152,4 mm)
- Operates on a closed loop controlled, high speed iris valve, tied to the on board microprocessor, which constantly monitors the internal pressure of the weld using a sensitive pressure transducer.



For further information please visit our website  
or e-mail us to [sales@arcmachines.com](mailto:sales@arcmachines.com)

*Innovation, Quality & Reliability*



[www.youtube.com/user/Orbital10500](http://www.youtube.com/user/Orbital10500) You Tube



[www.arcmachines.com/ExelbyAMI](http://www.arcmachines.com/ExelbyAMI)

Exel Orbital Products is a subsidiary of Arc Machines, Inc.

10500 Orbital Way, Pacoima, CA 91331-7129 U.S.A Tel: +1 (818) 896-7733 Fax: +1 (818) 896-6897