

EXEL ORBITAL WELDING PRODUCT LINE



● EPS-1500 ADVANCED FUSION WELDING POWER SUPPLY ●

The new 150 Amps EPS-1500 Power Supply, a member of Arc Machine's Exel product line, is designed for high-purity tube & fittings applications used in the semiconductor, biopharmaceutical, aerospace, nuclear and food & dairy industries. It is the smallest and lightest full featured orbital tube welder on the market.

Features

- High resolution, 12" (300 mm) color touch-screen with intuitive graphic interface for quick and easy programming.
- Auto weld schedule generation plus patented S³ weld scheduling for multi-level welds.
- Full data acquisition capability.
- Reliable and portable - only 37 lbs! (17 kg)
- Multiple language capability.
- Two USB ports including barcode reader compatibility.
- Built-in thermal printer.
- Network and Internet connectivity.



Water Cooler

➤ The optional Water Cooler is recommended when welding heavy wall or high duty-cycle applications.

● QUICK SPECS ●

Input Power

115 - 230 VAC service
Single-phase
50/60 Hz

I/O Device

Two USB's (2.0)

Multi-Level Functions

Primary Amps, Background Amps, Primary RPM, Background RPM, Primary Pulse Rate, Background Pulse Rate, Current Mode (continuous, pulsed), Rotation Mode (continuous, stepped, off)

Weld Current

3-100/150 A
100/30% Duty Cycle

Memory Capacity

4 GB

Current Pulse Rate

10 - 100 PPS

Dimensions

12" x 15.5" x 14.6"
(30 cm x 39 cm x 37 cm)

Water Cooler

Optional

Overrides

Programmable from
0% - 100%

Weight

37 lbs.
(17 kg)



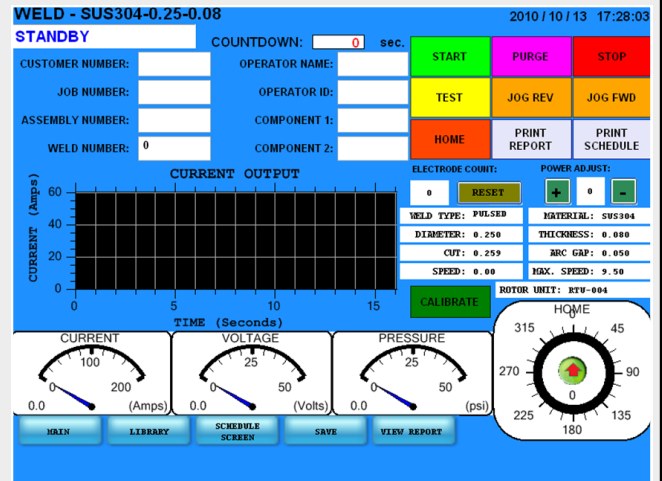
www.arcmachines.com/ExelbyAMI

EPS-1500 COMPACT AND FEATURE-RICH TUBE WELDING POWER SUPPLY

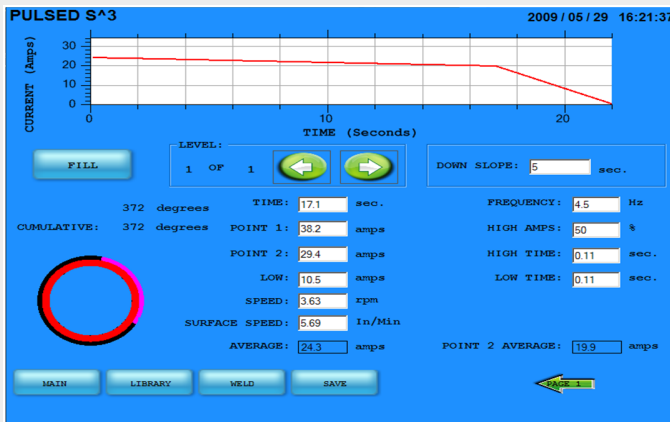
USER-FRIENDLY SOFTWARE

Programming the EPS-1500 is so easy that with only a few minutes of training, an experienced orbital welder can write multi-level, multi-pass, stepped or S³ welding programs and inexperienced welders can be trained in a fraction of the normal time.

Component data, welding control pad, weld system parameters and weld progress all on one convenient screen. ▶



WELDING TO THE POWER OF PATENTED S³



An Alternative to Multi-Level Welds

Adjusting an S³ weld is easy: by changing one or both points which describe the S³ schedule the entire slope of the line and the levels associated with it recalculate automatically.

◀ S³ Weld Schedule on the EPS-1500

WELD HEAD COMPATIBILITY

The EPS-1500 Power Supply is compatible with AMI[®] and all major competitor's weld heads including Swagelok[®] and Dimetrics[®].



Model 8



Model 9



Model 21

EXEL ORBITAL WELD HEADS

HIGH PERFORMANCE EXEL WELD HEADS

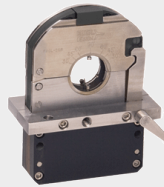
The Exel Weld Head range is made up of a Rotor Driver unit plus five interchangeable, air-cooled Weld Heads specifically designed to deliver top-quality, repeatable welds in high purity Tube & Fittings applications. The Rotor Driver and Weld Heads can be used with the Exel EPS Power Supply or with any of the AMI Tube Power Supplies (M205, M207, M307).



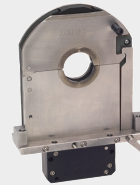
RDR-005



RTU-004SL



RTU-008SL



RTU-016SL



RTU-008



RTU-032

- Rugged air-cooled construction for lower maintenance/operating costs.
- Slim-line & heavy duty fixtures.
- Weld components from 1/8" - 1" (3,175 mm - 25,4 mm).
- Superior clamping & ease of alignment.



◀ The RDR Series rotor drivers operates all the rotor units in the Exel product line, including the slim line series.

- The robust, high impact resistant plastic design ensures superior reliability under the most extreme construction conditions.

SLIM LINE RANGE FOR SPECIAL APPLICATIONS & MICRO FITS

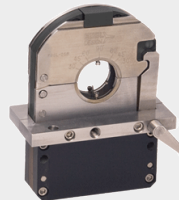
RTU-004



Sizes: 1/8" - 1/4"
(3,175 mm - 6,35 mm)

cf Swagelok® Series 4

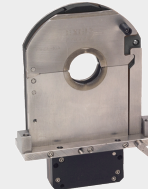
RTU-008SL



Sizes: 1/8" - 1/2"
(3,175 mm - 12,7 mm)

cf Swagelok® Series 8

RTU-016SL



Sizes: 1/2" - 1"
(12,7 mm - 25,4 mm)

No Direct Competitor

- Unique "over the top clamp mechanism" combined with solid tube inserts ensures stronger fixturing and easier component alignment.
- High temperature thermoplastic construction gives significant advantages in heat management and durability.
- Ideal for restricted access applications such as sanitary ferrules and other limited-clearance fitting applications.

www.arcmachines.com/ExelbyAMI

EXEL ORBITAL WELD HEADS & PRESSURE CONTROLLER

AIR-COOLED WELD HEADS

RTU-008



Sizes: 1/4" - 5/8"
(6,35 mm - 15,87 mm)
cf Swagelok® Series 5

- Extended duty cycle.
- Superior, repeatable and secure fixturing for Semiconductor and Biopharmaceutical industries.
- Nearly 2x clamping power over competitors.
- Patented latch system on the RTU-032 provides extraordinary rigid fixturing.

RTU-032



Sizes: 1/2" - 2"
(12,7 mm - 50,8 mm)
cf Swagelok® Series 10
and Series 20



◀ Patented latch system

AUTOMATIC PRESSURE CONTROLLER

SG1 - The First Automatic Pressure Controller for Orbital Welding of Tube or Pipe

- Sizes: 1/8" - 6" (3,175 mm - 152,4 mm)
- Operates on a closed loop controlled, high speed iris valve, tied to the on board microprocessor, which constantly monitors the internal pressure of the weld using a sensitive pressure transducer.



SG1



For further information please visit our website
or e-mail us to sales@arcmachines.com

Innovation, Quality & Reliability



www.youtube.com/user/Orbital10500 YouTube



www.arcmachines.com/ExelbyAMI

Exel Orbital Products is a Subsidiary of Arc Machines, Inc.

10500 Orbital Way, Pacoima, CA 91331-7129 U.S.A Tel: +1 (818) 896-7733 Fax: +1 (818) 896-6897